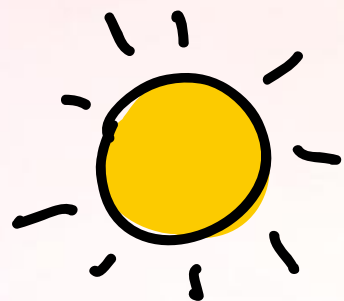


Unit 16

Seasons and  
the weather

Lesson 3 - Part 1, 2, 3

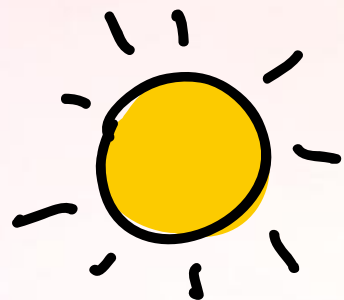




# Table of contents

- 01. Warm-up and review**
- 02. Listen and repeat.**
- 03. Listen and repeat.**
- 04. Let's chant**
- 05. Fun corner and wrap-up**





# Warm-up and review



# SUPERMARIO



Start

# SUPERMARIO





# How to play!

- Read and order the words in 15s.
- Correct → get stars.



PLAY





is / in / Ha / weather / spring? /

Noi / How / in / the

Start

Answer

**How is the weather in Ha Noi  
in spring?**

Next





is / cool / in / autumn. /

rainy / It / and

Start

Answer

**It is cool and rainy in autumn.**



Next



winter? / you / do / usually /

What / in / wear

Start

Answer

**What do you usually  
wear in winter?**

Next





in / I / wear / summer. /

T-shirt / skirt / a / and / a

Start

Answer

**I wear a T-shirt and  
a skirt in summer.**

Next





a / blouse / I / wear / rainy /  
trousers / in / and / season.

Start

Answer

**I wear a blouse and trousers  
in rainy season.**

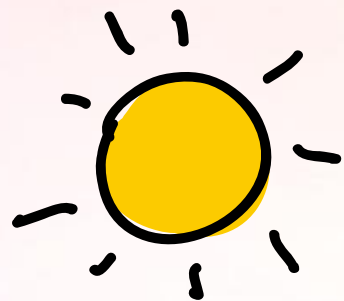
Next





# SUPER MARIO

EXIT



2

**Listen and  
repeat.**





# ❖ Listen and repeat

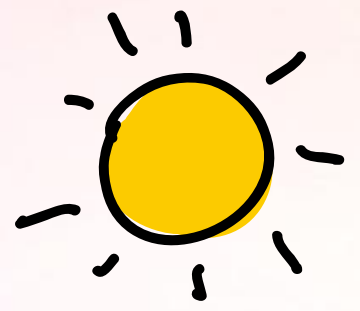


It's cloudy in autumn.



I wear jeans in winter.





**Listen and read.**  
**Pay attention to**  
**the intonation.**





❖ Listen and repeat. Pay attention to the intonation.



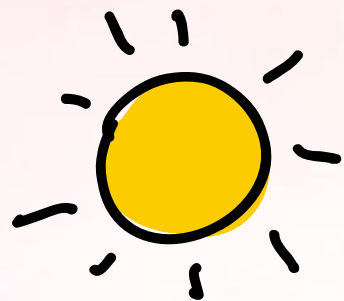
 1. It's humid in spring. ↘

 2. Dresses are perfect for today. ↘

 3. I wear trousers in summer. ↘

 4. Jackets are good for winter. ↘





# Let's chant



# ❖ Listen





# ❖ Let's chant

It's hot in summer.



I wear shorts.



You wear a dress.



And you wear a hat.



We like summer outfits.



 ❖ Let's chant

It's cold in winter.



I wear a jumper.



You wear trousers.



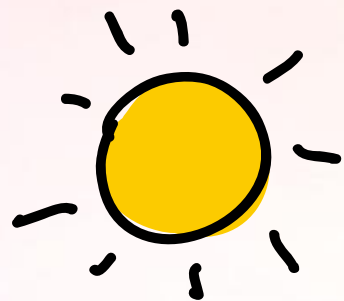
We wear scarves outside.



We like winter clothes.







# Fun corner and wrap-up





# Let's play!



Start



# How to play

- ✓ Look the word.
- ✓ Read aloud the answer with the correct word stress.



Play



You wear a jumper in autumn.



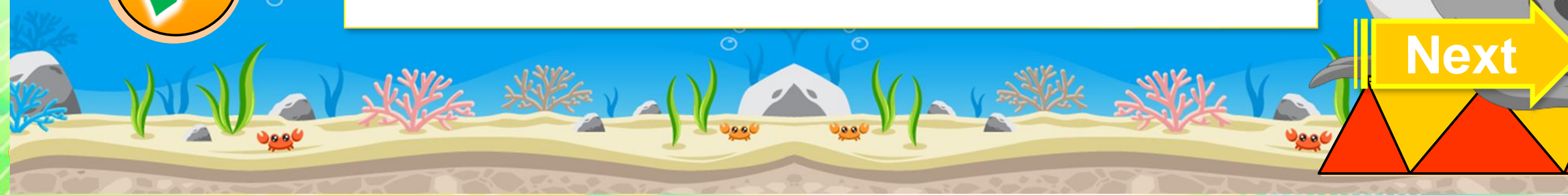
wear - autumn



wear - jumper - autumn



Next



You wear a T-shirt and shorts  
in summer.



**True**



**False**

**Next**



You wear a blouse and  
trousers in spring.



**True**



**False**

**Next**



**Winter is hot and windy.**



**True**



**False**

**Next**



**Spring is warm.**



**True**



**False**

**Next**



**Summer is cool.**



**True**



**False**

**Next**



Well done !



Next



# Thank you

For joining

